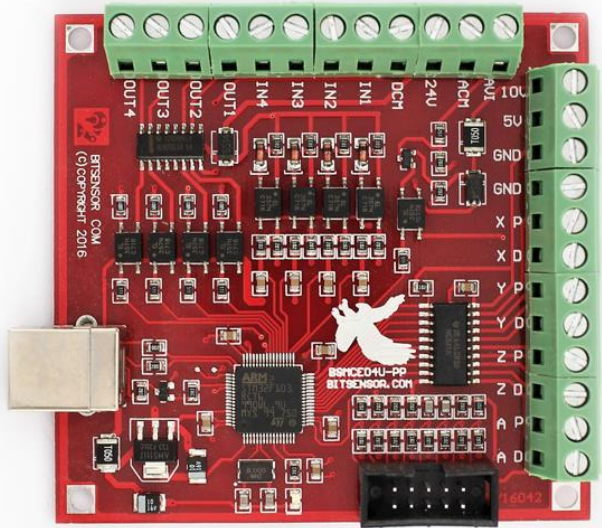


36 V (Stepper Motor Driver 18V-50V 2Phase 4A)
60 V (Stepper Motor Driver 24V-80V 2Phase 7.8A)
GND

Example for 1 axis (X, same applies to Y, Z and A axis)



PC

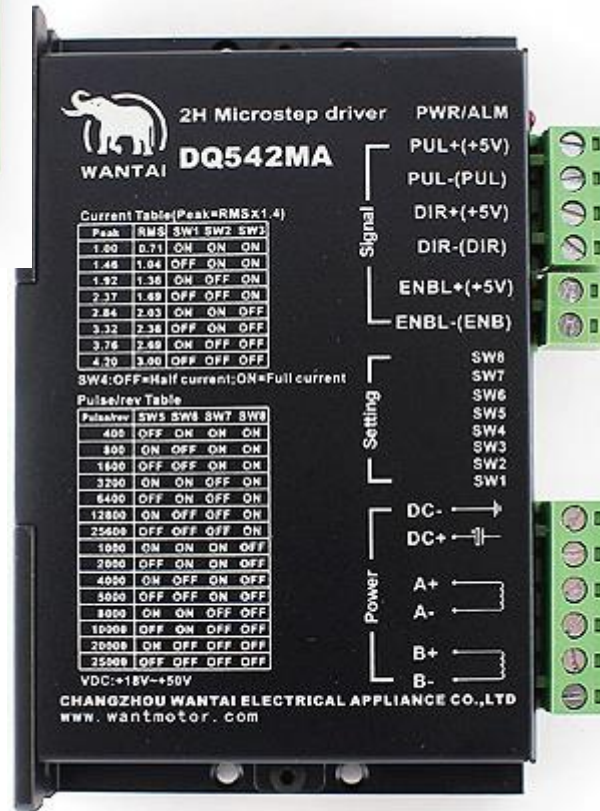


+5V

P
D



+V PSU -V PSU



+5V
P
+5V
D



-V PSU
+V PSU
A+ BLACK MOTOR
A- GREEN MOTOR
B+ RED MOTOR
B- BLUE MOTOR